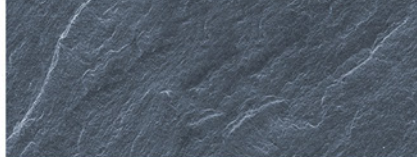




ECO COLLECTION

Environmentally Friendly
Promotional Products and Gifts



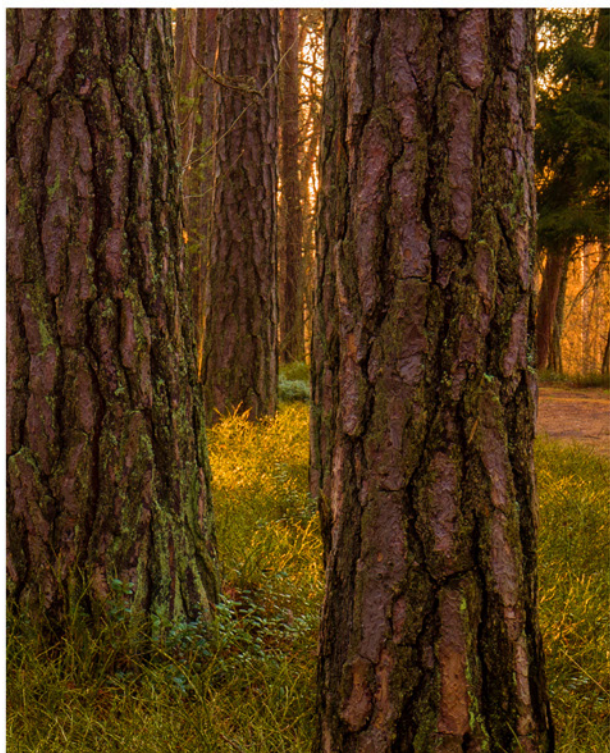
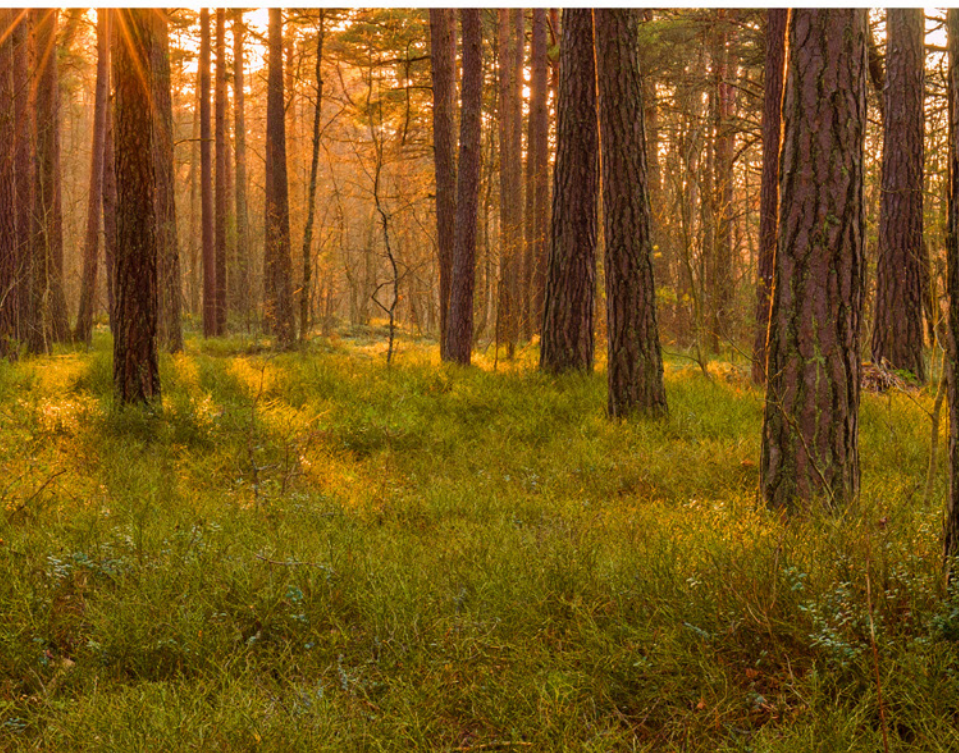
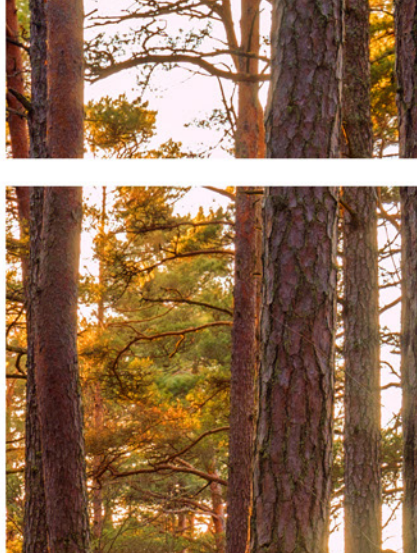




CONTENT

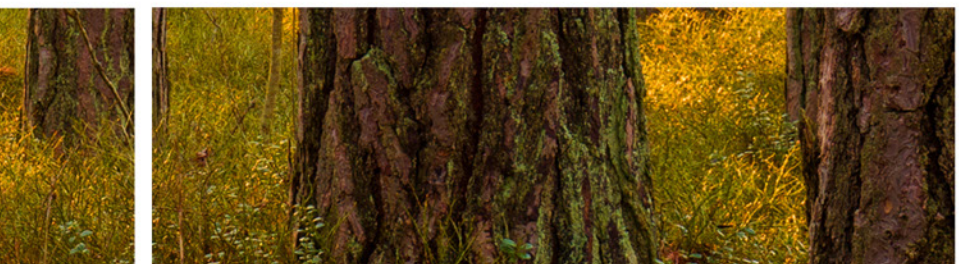
Our range of eco-friendly promotional products will leave a lasting impression on your brand; not the planet.

WOOD	3
SLATE	13
BAMBOO	15
CORK	21
RICE HUSK	29
COTTON	33
JUTE	39
PAPER	53
GLASS	59
STAINLESS STEEL	65
REUSE AND REDUCE	71



WOOD

Wood is a natural and renewable resource which provides a unique surface for branding. Wood can produce variances in the grain pattern, colour and branding of promotional products which highlights its natural look.





Tumbling Tower

Code: 113085

Description: Tumbling Tower is a game of physical skill where a tower of 48 wooden blocks is constructed and players take turns removing one block at a time without causing the tower to fall. The game is beautifully presented in a wooden box with a tower stacker and instructions.

Branding Options:

- Laser Engraving



Wood Yoyo

Code: 113591

Description: Yoyo that is manufactured from wood and cotton string which are renewable resources.

Branding Options:

- Pad Print • Laser Engraving





Radiata Colouring Set

Code: 115886

Description: Set of eight unpainted wood colouring in pencils, a pencil sharpener and an eraser in a natural wood box. The box has a sliding lid which doubles as a ruler with metric and imperial graduations.

Branding Options:

- Pad Print



Rally Skipping Rope

Code: 112974

Description: Robust skipping rope with comfortable wooden handles and a strong braided rope.

Branding Options:

- Pad Print • Laser Engraving



Heritage Rimu Wood Pen

Code: 107031

Description: Twist action ball pen which is manufactured from genuine New Zealand rimu wood with shiny chrome accents. It has a black Cross style refill with 800 metres of writing ink and it can be presented in an optional black velvet sleeve or a gift box.

Branding Options:

- Pad Print • Laser Engraving



Supreme Wood Pen

Code: 114975

Description: Twist action maple wood ball pen with shiny chrome accents. It has a black Cross style refill with 800 metres of writing ink and a tungsten carbide ball for improved writing quality. The upper and lower barrel laser engrave to a natural etch and it can be presented in an optional velvet sleeve or a gift box.

Branding Options:

- Pad Print • Laser Engraving





Echo Key Ring

Code:

- 116583 - Echo Key Ring – Round
- 116770 - Echo Key Ring – Square
- 116771 - Echo Key Ring – Rectangle

Description: Natural beech wood key ring which is available in rectangular, square and round shapes. They have a decorative metal trim and a shiny chrome split ring.

Branding Options:

- Laser Engraving



Artisan Key Ring

Code:

- 112137 - Artisan Key Ring – Rectangle
- 112136 - Artisan Key Ring – Round

Description: Natural wood key ring which is available in rectangular and round shapes with a shiny chrome split ring.

Branding Options:

- Pad Print



Albion Key Ring

Code: 112520

Description: Rectangular metal key ring which has a shiny chrome finish and a decorative wood plate that laser engraves to a natural etch. The shiny chrome plating on the back of the key ring also engraves to a natural etch. Albion is beautifully presented in a black gift box.

Branding Options:

- Pad Print • Laser Engraving



Timberland Power Bank

Code: 116667

Description: On trend 4000mAh power bank which is manufactured from laminated wood. It has an input power of 5V/1000mAh and an output power of 5V/1000mAh. Timberland is presented in a natural unbleached gift box with a white Micro-B USB cable and an instruction leaflet. An optional EVA carry case and a triple connector cable are available on request.

Branding Options:

• Pad Print • Laser Engraving • Direct Digital



Wooden Wine Box

Code: 110764

Description: Presentation box for a bottle of wine which has a sliding lid and is handcrafted from pine wood. It will hold a wine bottle which is up to 80mm in diameter. Wood wool is included in the box and with a logo tastefully branded on the lid it will elevate any bottle of wine into a much appreciated and remembered gift.

Branding Options:

- Pad Print • Laser Engraving



Boutique Bottle Opener

Code: 116120

Description: Smart metal bottle opener with a wood handle which laser engraves to a natural etch.

Branding Options:

- Laser Engraving





Coventry Cheese Board

Code: 115953

Description: Large rustic cheese board with natural rope handles which is manufactured from FSC approved acacia wood. It has a cheese knife with its own compartment so it is always ready for use. The cheese board laser engraves to a natural etch and is beautifully presented in a matt black gift box.

Branding Options:

- Laser Engraving



Homestead Serving Board

Code: 115953

Description: Smart serving board which is manufactured from FSC approved acacia wood. It has a leather strap which can be used for hanging the board up when not in use. The serving board laser engraves to a natural etch and is beautifully presented in a matt black gift box.

Branding Options:

- Laser Engraving



Estate Serving Board

Code: 115949

Description: Large round serving board which is manufactured from FSC approved acacia wood. The handle has a stainless steel rivet with a leather strap which can be used for hanging the board up when not in use. The serving board laser engraves to a natural etch and is beautifully presented in a matt black gift box.

Branding Options:

- Laser Engraving



Villa Serving Board

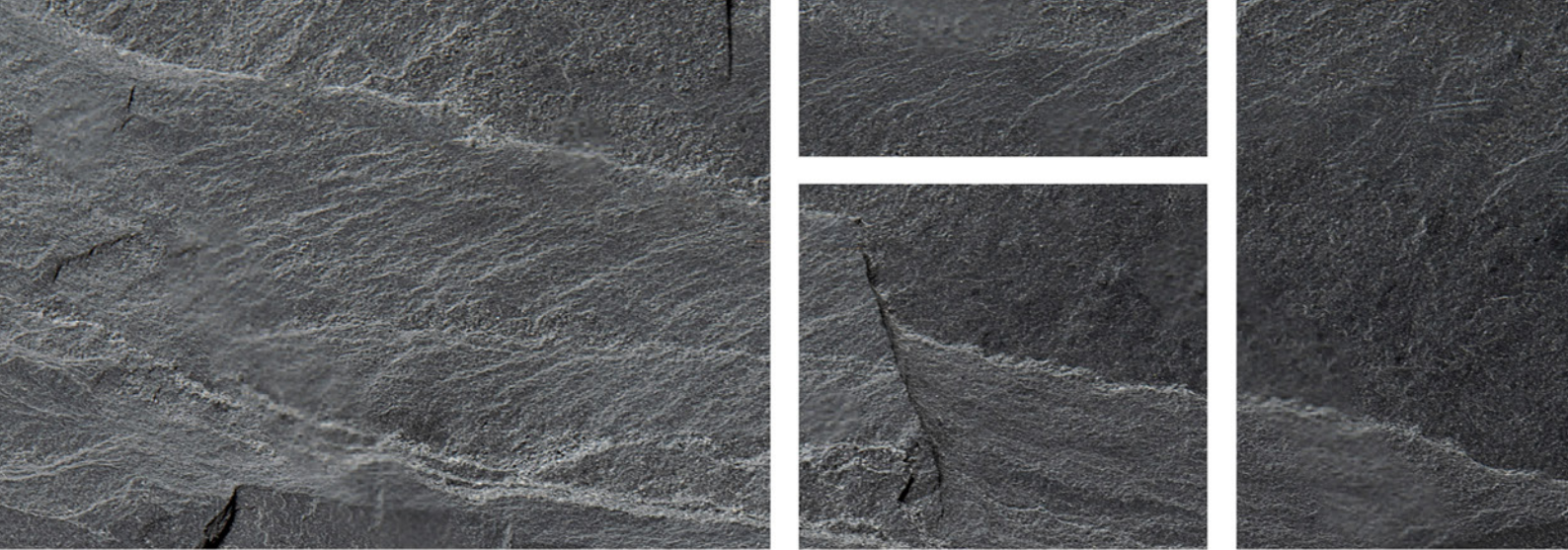
Code: 115951

Description: Stylish serving board which is manufactured from FSC approved acacia wood. The handle has a stainless steel rivet with a leather strap which can be used for hanging the board up when not in use. The serving board laser engraves to a natural etch and is beautifully presented in a matt black gift box.

Branding Options:

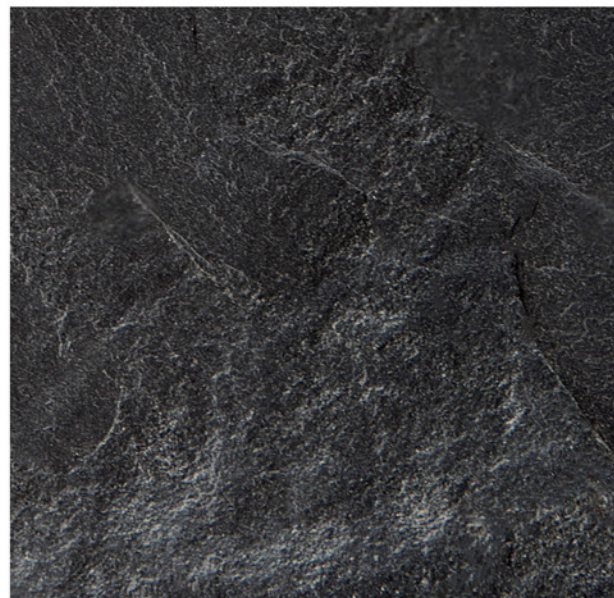
- Laser Engraving





SLATE

Slate is a naturally occurring stone that is inherently eco-friendly. It is extremely durable, easy care and absorbent so it is an excellent material for making coasters and serving boards.





Slate Coaster

Code:

- 113119 – Slate Coaster – Single
- 113118 – Slate Coaster Set of 4

Description: Deluxe natural slate coaster that has soft EVA feet which are non-slip and non-marking. It is available as a single coaster or as a set of four in a natural cardboard gift box with a window to show off the brand. The single coaster can be presented in an optional velvet sleeve with a Velcro closure.

Branding Options:

- Laser Engraving

Slate Cheese Board

Code: 115959

Description: Luxury bamboo cheese board with a slate insert which can be removed for cleaning. It has two cheese knives and a cheese fork with their own compartments so they are always ready for use. The slate insert laser engraves to a natural etch and the cheese board is beautifully presented in a matt black gift box. Bamboo is a natural material which produces unavoidable variances in the grain pattern and colour.

Branding Options:

- Laser Engraving



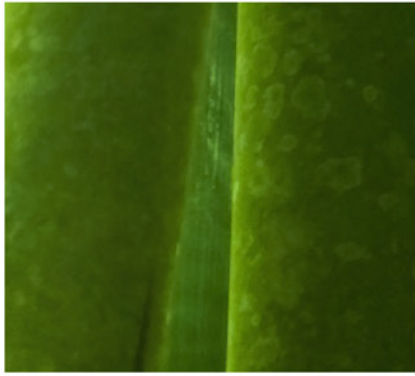
Slate Serving Board

Code: 115104

Description: Deluxe natural slate serving board with four soft non-slip and non-marking polyurethane pads on the base. It has natural hemp rope handles and is beautifully presented in an unbleached cardboard gift box.

Branding Options:

- Laser Engraving



BAMBOO

Bamboo is the fastest growing plant on our planet and grows up to 10cm a day which makes it one of our most renewable resources. It requires very little water to grow and can be re-harvested many times without harmful effects on the plant or the environment. Bamboo can produce variances in the grain pattern, colour and branding of promotional products which highlights its natural look.





Choose any colour combination from the colour palette at no extra cost.



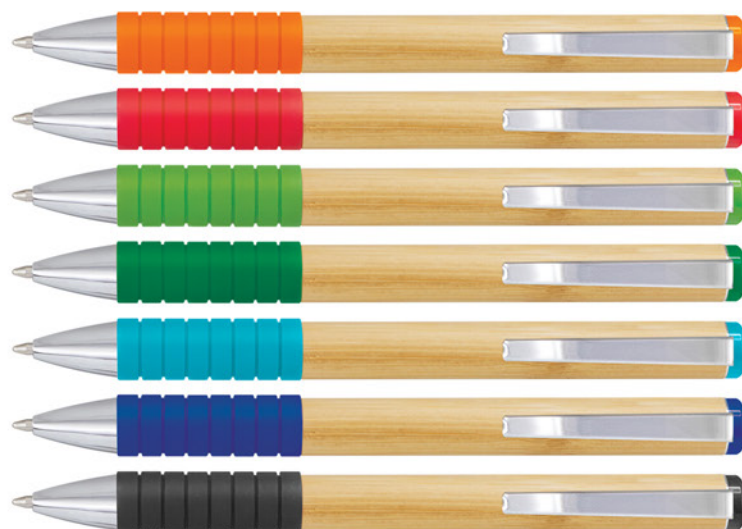
Metro Cup Bamboo

Code: 116266

Description: Eco inspired 340ml reusable coffee cup which is manufactured from a unique 50/50 blend of bamboo and BPA-free melamine. Using bamboo to manufacture a reusable coffee cup reduces the amount of plastic, accelerates its biodegradability and produces a trendy natural look. Metro has a secure push on silicone lid and a wide heat resistant silicone band. The lid and band can be mixed and matched in any colour combination from the colour palette at no extra cost. Up to five different colour combinations are included in the price and more are available for an additional charge. An optional gift box is available and handwashing is recommended.

Branding Options:

- Screen Print • Debossed



Bamboo Twist Pen

Code: 116651

Description: Twist action ball pen with a natural bamboo barrel. The pen has a black TRENDS refill with 300m of DOKUMENTAL ink. It features a soft rubber grip, shiny chrome trim and a tungsten carbide ball for improved writing quality. Wood is a natural material which produces unavoidable variances in the grain pattern, colour and branding.

Branding Options:

- Pad Print • Screen Print • Direct Digital • Laser Engraving



Ancona Bamboo Pen

Code: 116650

Description: Retractable ball pen with a natural bamboo barrel and shiny chrome accents. It has a black TRENDS large volume refill with 1800 metres of German manufactured DOKUMENTAL ink and a tungsten carbide ball for improved writing quality. Ancona laser engraves to a natural etch.

Branding Options:

- Pad Print • Laser Engraving



Vistro Bamboo Pen

Code: 116262

Description: Retractable bamboo ball pen with a stylish contoured barrel and grip. It has shiny chrome accents and a black large volume refill with 500 metres of writing ink. The barrel laser engraves to a natural etch and it can be presented in an optional velvet sleeve or a gift box.

Branding Options:

- Pad Print • Laser Engraving



Panama Bamboo Pen

Code: 116261

Description: Retractable bamboo ball pen with shiny chrome accents and a black large volume refill with 500 metres of writing ink. It laser engraves to a natural etch and Panama can be presented in an optional velvet sleeve or a gift box.

Branding Options:

- Pad Print • Laser Engraving

Serano Bamboo Pen

Code: 116263

Description: Retractable bamboo ball pen with a stylish contoured grip and shiny chrome accents. It has a black large volume refill with 500 metres of writing ink. The barrel laser engraves to a natural etch and it can be presented in an optional velvet sleeve or a gift box.

Branding Options:

- Pad Print • Laser Engraving





Bamboo Coasters

Code: 112030

Description: Set of four coasters which are handcrafted from eco-friendly, sustainably grown bamboo.

Branding Options:

- Pad Print • Screen Print • Direct Digital



Bamboo Notebook

Code: 116213

Description: Unique medium size notebook with a genuine bamboo cover. It has 80 leaves (160 pages) of lined cream paper and a pen loop. The cover laser engraves to a natural etch.

Branding Options:

- Pad Print • Laser Engraving



Bamboo Bluetooth Speaker

Code: 116648

Description: With sleek natural bamboo casing and an ambient light, this Bluetooth speaker looks as good as it sounds. It will play music for two hours and features a non-marking base. The speaker is presented in a natural unbleached box with a Micro-B USB cable and an instruction leaflet.

Branding Options:

- Pad Print





CORK

Cork is considered an eco-friendly material as the process of harvesting the material doesn't harm the tree, making it a completely renewable and sustainable resource.





Oakridge Cup

Code: 113791

Description: On trend 350ml reusable coffee cup with a unique soft touch natural cork outer coating that insulates the cup. It is manufactured from polypropylene which is shatterproof, odour resistant and BPA free. The cup has a secure screw on lid with a splash proof flip closure and handwashing is recommended.

Branding Options:

- Pad Print • Screen Print





Metro Cup - Cork Band

Code: 115233

Description: Fashion inspired 340ml reusable glass coffee cup with a secure push on silicone lid and a trendy heat resistant cork band. Glass is a natural choice for a clean, pure taste and it offers an eco-friendly alternative to single use paper cups. Metro Cup is presented in an unbleached cardboard gift box which has a window to show the branding and product care instructions are printed on one side. An optional gift tube is available and handwashing is recommended.

Branding Options:

- Pad Print • Laser Engraving



Choose any colour combination from the colour palette at no extra cost.



Express Cup Deluxe - Cork Band

Code: 115790

Description: Design inspired 350ml reusable coffee cup with a trendy heat resistant cork band and a secure screw on lid with a splash proof flip closure. It is manufactured from polypropylene which is shatterproof, odour resistant and BPA free. The cups illustrated are examples of colour combinations. The cup, lid and flip closure can be mixed and matched in any colour combination from the standard Express Cup Deluxe parts at no extra cost. Up to five different colour combinations are included in the price and more are available for an additional charge. It can be presented in an optional black gift box and handwashing is recommended. Express Cup Deluxe is protected under New Zealand Design Registration No. 419451 and Australian Design Registration No. 361937.

Branding Options:

- Pad Print • Laser Engraving



Inca Notebook and Pen

Code:

- 116301 - Inca Pen
- 116302 - Inca Notebook
- 116303 - Inca Notebook with Pen

Description: Medium size notebook with a hard cover which is finished with a stylish combination of on trend natural cork and smooth PU. It has 80 leaves (160 pages) of lined cream paper, an elastic closure band and an elastic pen loop which holds a matching retractable ball pen with a cork barrel. The pen has a black TRENDS refill with 1000 metres of German manufactured DOKUMENTAL ink and a tungsten carbide ball for improved writing quality. The notebook and pen are available separately.

Branding Options:

- Laser Engraving • Direct Digital • Pad Print (Notebook Only) • Debossing (Notebook Only)



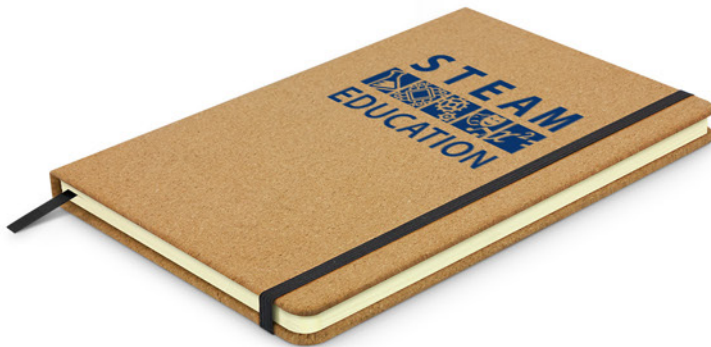
Oakridge Notebook

Code: 113258

Description: Smart medium size notebook with a hard cover which is delightfully finished with textured natural cork. It has 80 leaves (160 pages) of high quality lined cream paper and a bookmark ribbon.

Branding Options:

- Laser Engraving



Somerset Cork Notebook

Code: 116212

Description: Medium size notebook which has a hard cover with a trendy natural cork finish. It has 80 leaves (160 pages) of lined cream paper, a bookmark ribbon and an elastic closure band.

Branding Options:

- Pad Print • Laser Engraving • Direct Digital • Screen Print





Oakridge Tote Bag

Code: 113696

Description: Smart tote bag which is manufactured from unbleached 280gsm heavy cotton canvas. It has a trendy cork front panel and long handles so it can be carried on a shoulder.

Branding Options:

- Screen Print • Digital Transfer

Oakridge Drawstring Backpack

Code: 113697

Description: Drawstring backpack which is manufactured from unbleached 280gsm heavy cotton canvas. It has a trendy cork front panel and woven cotton drawstrings.

Branding Options:

- Screen Print • Digital Transfer



Oakridge Cork Coaster - Round

Code:

- 112967 - Oakridge Cork Coaster – Single
- 113033 - Oakridge Cork Coaster – Set of 4

Description: Robust and stylish natural cork coasters that provide protection from heat and spills which is available as a single coaster and in a set of four. It also has the benefit of a comfortable soft touch texture while being very durable. This set is nicely presented in a natural cardboard gift box with a window to show off the brand

Branding Options:

- Screen Print • Laser Engraving



Oakridge Cork Coaster - Square

Code:

- 112966 - Oakridge Cork Coaster – Single
- 113034 - Oakridge Cork Coaster – Set of 4

Description: Robust and stylish natural cork coasters that provide protection from heat and spills which is available as a single coaster and in a set of four. It also has the benefit of a comfortable soft touch texture while being very durable. This set is nicely presented in a natural cardboard gift box with a window to show off the brand.

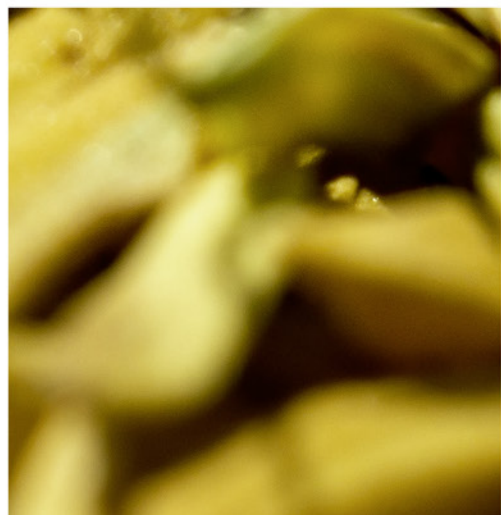
Branding Options:

- Screen Print • Laser Engraving



RICE HUSK

Rice husk is a waste product with little value and the agricultural industry often dispose of it by burning, which creates air pollution. Using it to make promotional products helps to reduce the amount of plastic, accelerates the product's biodegradability, and produces a trendy natural look.





Choice Cup

Code: 113586

Description: Eco-friendly 300ml, double wall reusable coffee cup which will keep drinks hot for longer and remain comfortable to hold. It has a secure push on lid with a splash proof sliding closure. Choice Cup has an incredible story to tell and is manufactured from a 50/50 blend of natural rice husk fibre and polypropylene which is shatterproof, odour resistant and BPA free. Rice husk is a waste product with little value and the agricultural industry often dispose of it by burning which creates air pollution. Using it to make Choice Cup reduces the amount of plastic used, accelerates its biodegradability and produces a trendy natural look. Handwashing is recommended.

Branding Options:

- Pad Print



Choose any colour combination from the colour palette at no extra cost.



Express Cup - Natura

Code: 115581

Description: Design inspired 350ml reusable coffee cup that has an incredible story to tell. It is manufactured from a 50/50 blend of natural rice husk fibre and BPA free polypropylene. Rice husk is a waste product with little value and the agricultural industry often dispose of it by burning which creates air pollution. Using it to make a reusable coffee cup reduces the amount of plastic, accelerates its biodegradability and produces a trendy natural look. It has a heat resistant silicone band and a secure screw on lid with a splash proof flip closure. The flip closure and band can be mixed and matched in any colour combination from the colour palette. Up to five different colour combinations are included in the price and more are available for an additional charge. Handwashing is recommended and it can be presented in an optional black gift box. Express Cup Natura is protected under New Zealand Design Registration No. 419451 and Australian Design Registration No. 361937.

Branding Options:

• Pad Print • Screen Print • Debossed



Choose any colour combination from the colour palette at no extra cost.



Express Cup - Double Wall Natura

Code: 116348

Description: Unique 340ml double wall reusable coffee cup which will keep drinks hot for longer and remain comfortable to hold. It is manufactured from a 50/50 blend of natural rice husk fibre and BPA free polypropylene. Rice husk is a waste product with little value and the agricultural industry often dispose of it by burning which creates air pollution. Using it to make a reusable coffee cup reduces the amount of plastic, accelerates its biodegradability and produces a trendy natural look. It has a decorative silicone band and a secure screw on lid with a splash proof flip closure. The silicone band and flip closure can be mixed and matched in any colour combination from the colour palette at no extra cost. Up to five different colour combinations are included in the price and more are available for an additional charge. Handwashing is recommended and it can be presented in an optional black gift box. Express Cup Natura is protected under New Zealand Design Registration No. 419451 and Australian Design Registration No. 361937.

Branding Options:

• Pad Print • Screen Print • Debossed



COTTON

Cotton plants produce fluffy white fibres which are harvested, spun into thread and then woven into fabric. Cotton fabric is soft, durable, washable and completely renewable. There has been a massive increase in the use of cotton for shopping bags, tote bags and drawstring bags now that single-use plastic bags are on the decline.





Florida Cotton Drawstring Backpack

Code: 112918

Description: 140gsm cotton backpack with white drawstrings and metal eyelets at the base for added strength. It is branded on both sides in full colour and the stitching will match the main branding colour unless requested otherwise. A production lead time of 15 working days applies to this product.

Branding Options:

- Sublimation Print

Cotton Drawstring Backpack

Code: 111804

Description: Drawstring backpack which is manufactured from 120gsm cotton. The black, blue, red and white bags have white drawstrings and the natural backpack has natural drawstrings. Cotton is an environmentally friendly renewable resource and it is easy to wash ensuring the backpack is always clean.

Branding Options:

- Screen Print • Digital Transfer



Sonnet Cotton Tote Bag - Colours

Code: 107689

Description: Environmentally friendly tote bag with longer handles so it can be carried on a shoulder. It is manufactured from 130gsm natural cotton.

Branding Options:

- Screen Print • Digital Transfer



Sonnet Cotton Tote Bag

Code: 100566

Description: Environmentally friendly tote bag with longer handles so it can be carried on a shoulder. It is manufactured from 130gsm unbleached natural cotton.

Branding Options:

- Screen Print • Digital Transfer



Carnaby Cotton Tote Bag - Colours

Code: 109135

Description: Environmentally friendly tote bag with a gusset which is manufactured from 130gsm unbleached natural cotton.

Branding Options:

- Screen Print • Digital Transfer



Carnaby Cotton Shoulder Tote

Code: 109072

Description: Large environmentally friendly tote bag with a gusset which is manufactured from 130gsm unbleached natural cotton. It has longer handles so it can be comfortably carried on the shoulder.

Branding Options:

- Screen Print • Digital Transfer



Carnaby Cotton Tote Bag

Code: 100568

Description: Environmentally friendly tote bag with a gusset which is manufactured from 130gsm unbleached natural cotton.

Branding Options:

- Screen Print • Digital Transfer



Eve Cosmetic Bag

Code::

- 114180 - Eve Cosmetic Bag – Small
- 114181 - Eve Cosmetic Bag – Medium
- 114182 - Eve Cosmetic Bag – Large

Description: Smart cosmetic bag which is manufactured from robust 400gsm unbeached natural cotton canvas. It has a zippered closure and is available in three handy sizes.

Branding Options:

- Screen Print • Digital Transfer



Cotton Gift Bag

Code:

- 111805 - Cotton Gift Bag – Medium
- 111806 - Cotton Gift Bag - Large

Description: Drawstring gift bag that is available in two sizes and is manufactured from 120gsm cotton which is a renewable resource.

Branding Options:

- Screen Print • Digital Transfer



Galleria Cotton Tote Bag

Code: 115116

Description: Large tote bag with an extra wide gusset and a fabric-lined hard base for added strength. It is manufactured from heavy 280gsm natural cotton canvas and has long matching handles.

Branding Options:

- Screen Print • Digital Transfer



Cotton Tea Towel

Code: 112227

Description: Absorbent tea towel which is manufactured from 180gsm cotton twill.

Branding Options:

- Screen Print



Bistro Cotton Tea Towel

Code: 115914

Description: Absorbent tea towel that is manufactured from 180gsm cotton. It is branded on one side with stunning high definition digital printing which is colour fast. A production lead time of 20 working days applies to this product by air freight and larger orders can be sea freighted on request to reduce the freight cost.

Branding Options:

- Direct Digital





JUTE

Jute is a plant fibre that is spun into a coarse thread and woven to make a robust heavy-duty fabric. It is commonly used for bags to store grain but more recently it has become an affordable on trend fabric for shopping bags due to its strength, sustainability and stunning natural look. It can also be blended with cotton to produce juco which is another material that is becoming very popular due to its strength and smoother branding surface.





Modena Jute Tote Bag

Code: 115000

Description: Extra large laminated jute tote bag with a gusset and padded cotton handles. It has a natural version as well as the choice of four colours where the gussets and handles are dyed to match.

Branding Options:

- Screen Print • Digital Transfer



Modena Jute Tote Bag - Colour Match

Code: 115327

Description: Extra large laminated jute tote bag with a gusset and padded cotton handles. The bag and handles have been dyed to match.

Branding Options:

- Screen Print • Digital Transfer





Torino Jute Tote Bag

Code: 108038

Description: Extra wide laminated jute tote bag with a large gusset and padded cotton handles. It has a natural version as well as the choice of four colours where the gussets and handles are dyed to match.

Branding Options:

- Screen Print • Digital Transfer



Torino Jute Tote Bag - Colour Match

Code: 115325

Description: Extra wide laminated jute tote bag with a large gusset and padded cotton handles. The bag and handles have been dyed to match.

Branding Options:

- Screen Print • Digital Transfer



Lanza Jute Tote Bag

Code: 108036

Description: Large laminated jute tote bag with a gusset and padded cotton handles. It has a natural version as well as the choice of four colours where the gussets and handles are dyed to match.

Branding Options:

- Screen Print • Digital Transfer



Lanza Jute Tote Bag - Colour Match

Code: 115326

Description: Large laminated jute tote bag with a gusset and padded cotton handles. The bag and handles have been dyed to match.

Branding Options:

- Screen Print • Digital Transfer



Monza Jute Tote Bag

Code: 108037

Description: Smart laminated jute tote bag with a large gusset and padded cotton handles. It has a natural version as well as the choice of thirteen colours where the gussets and handles are dyed to match.

Branding Options:

- Screen Print • Digital Transfer



Monza Jute Tote Bag - Colour Match

Code: 115324

Description: Smart laminated jute tote bag with a large gusset and padded cotton handles. The bag and handles have been dyed to match.

Branding Options:

- Screen Print • Digital Transfer



Zeta Jute Tote Bag

Code: 108033

Description: Natural jute tote bag with strong unbleached cotton handles.

Branding Options:

- Screen Print • Digital Transfer



Jute Gift Bag

Code:

- 109068 - Jute Gift Bag – Small
- 109069 - Jute Gift Bag – Medium
- 109070 - Jute Gift Bag – Large

Description: Environmentally friendly natural jute drawstring gift bags in three convenient sizes.

Branding Options:

- Screen Print • Digital Transfer







Bodhi Cooler Bag

Code: 115745

Description: Large 19 litre cooler bag with PE foam insulation encased in a waterproof PEVA inner liner. The outer construction is an on-trend combination of natural jute partnered with natural cotton carry handles. Other features include a zippered top closure and a jute slip pocket on the front.

Branding Options:

• Screen Print • Digital Transfer

Asana Cooler Bag

Code: 115743

Description: Medium size 13 litre cooler bag with PE foam insulation encased in a waterproof PEVA inner liner. The outer construction is an on-trend combination of natural jute partnered with natural cotton carry handles. Other features include a zippered top closure and a jute slip pocket on the front.

Branding Options:

• Screen Print • Digital Transfer



Lucca Cooler Bag

Code: 115766

Description: Small 5 litre cooler bag with PE foam insulation encased in a waterproof PEVA inner liner. The outer construction is an on-trend combination of natural jute partnered with a natural unbleached cotton carry handle. Other features include a natural zippered top closure and a jute slip pocket on the front.

Branding Options:

• Screen Print • Digital Transfer





Donato Jute Double Wine Carrier

Code: 109082

Description: Two bottle wine carry bag with separated compartments which is manufactured from environmentally friendly laminated natural jute with unbleached woven cotton handles.

Branding Options:

- Screen Print • Digital Transfer

Napoli Jute Wine Carrier

Code: 109081

Description: Single bottle wine carry bag which is manufactured from environmentally friendly laminated natural jute with unbleached woven cotton handles.

Branding Options:

- Screen Print • Digital Transfer



Serena Jute Wine Carrier

Code: 108039

Description: Single bottle wine carry bag which is manufactured from environmentally friendly laminated natural jute with unbleached cotton handles and a clear PVC front panel.

Branding Options:

- Screen Print • Digital Transfer



Jute Produce Bag

Code:

- 115071 Jute Produce Bag - Large
- 115070 Jute Produce Bag - Medium

Description: Reusable jute bag with a drawstring closure which is ideal for transporting and storing heavier produce from farmers markets and supermarkets. The natural fibre allows produce to breathe so it is always in the best possible condition and can be reused many times, replacing the need for single use plastic bags. Jute is a strong, natural fibre and is environmentally friendly.

Branding Options:

- Screen Print • Digital Transfer



Jute Net Produce Bag

Code: 114984

Description: National Geographic has estimated that eight million tonnes of plastic enters the oceans every year. We all need to help reduce or eliminate single use plastic bags as they are one of the biggest contributors to the massive amount of plastic pollution on our planet. The unbleached jute net produce bag can be washed and reused many times. It is designed for transporting fruit and vegetables while allowing them to "breathe" so they arrive home in the best possible condition. It has a drawstring closure and an unbleached cotton patch for branding.

Branding Options:

- Screen Print





Jute Drawstring Backpack

Code: 109073

Description: Environmentally friendly natural jute drawstring backpack with woven cotton drawstrings and reinforced eyelets at the base for added strength.

Branding Options:

- Screen Print • Digital Transfer



Thera Jute Tote Bag

Code: 108034

Description: Large natural jute tote bag with strong unbleached cotton handles. It has a gusset in the base for increased carrying capacity.

Branding Options:

- Screen Print • Digital Transfer



Carrera Jute Tote Bag

Code: 108035

Description: Delightful high fashion laminated natural jute tote bag with padded cotton handles. It has a rounded gusset and a sewn in base for added capacity. Carrera has a natural version as well as the choice of three dyed colours.

Branding Options:

- Screen Print • Digital Transfer



Marley Juco Tote Bag

Code: 116297

Description: Natural laminated juco tote bag with a gusset and decorative unbleached cotton trim around the top. It has a slip-in corrugated cardboard base and long woven carry handles which are attached with brass rivets for added strength. Juco is a versatile and increasingly popular new fabric that is manufactured from a fine blend of natural jute and natural cotton.

Branding Options:

- Screen Print • Digital Transfer





Modena Juco Tote Bag

Code: 115008

Description: Extra large laminated juco tote bag with a jute gusset and base which has padded cotton handles. Juco is a versatile and popular new fabric that is manufactured from a fine blend of natural jute and natural cotton.

Branding Options:

- Screen Print • Digital Transfer



Torino Juco Tote Bag

Code: 115010

Description: Extra wide laminated juco tote bag with a large jute gusset and base which has padded cotton handles. Juco is a versatile and increasingly popular new fabric that is manufactured from a fine blend of natural jute and natural cotton.

Branding Options:

- Screen Print • Digital Transfer



Monza Juco Tote Bag

Code: 115004

Description: Smart laminated juco tote bag which has a large jute gusset and soft padded cotton handles. Juco is a versatile and increasingly popular new fabric that is manufactured from a fine blend of natural jute and natural cotton.

Branding Options:

- Screen Print • Digital Transfer



Lanza Juco Tote Bag

Code: 115006

Description: Large laminated juco tote bag with a jute gusset and base which has padded cotton handles. Juco is a versatile and increasingly popular new fabric that is manufactured from a fine blend of natural jute and natural cotton.

Branding Options:

- Screen Print • Digital Transfer





PAPER

Trees are a natural and renewable resource that absorb CO₂ from the atmosphere and store carbon in wood, which can be pulped and used to manufacture paper and cardboard. Paper derived from sustainably grown wood pulp is a natural product that can be recycled repeatedly.





Creative Sketch Set

Code: 113246

Description: Fold out set of 12 full size coloured pencils and a medium size 50 leaf unlined pad. It has a sturdy unbleached cardboard cover and neat elastic loops to securely hold the pencils.

Branding Options:

- Pad Print • Screen Print



Pictorial Notepad

Code: 113247

Description: Top opening 50 leaf unlined notepad with an unbleached cardboard cover. It is wire bound and has twelve full size coloured pencils included in a secure plastic sleeve.

Branding Options:

- Pad Print





Sienna Notebook

Code: 116214

Description: Medium size notebook which has a hard cover with an unbleached kraft paper finish. It has 80 leaves (160 pages) of lined cream paper, a book mark ribbon, an elastic closure band and a pen loop.

Branding Options:

• Pad Print • Screen Print • Direct Digital

Scandi Note Pad

Code: 113956

Description: Medium size on-trend notepad with 60 leaves (120 pages) of unlined paper and a heavy unbleached cardboard cover. It has an elastic closure band and wire binding across the top corner which allows it to open flat for easy sketching or writing.

Branding Options:

• Pad Print • Screen Print



Allegro Notebook

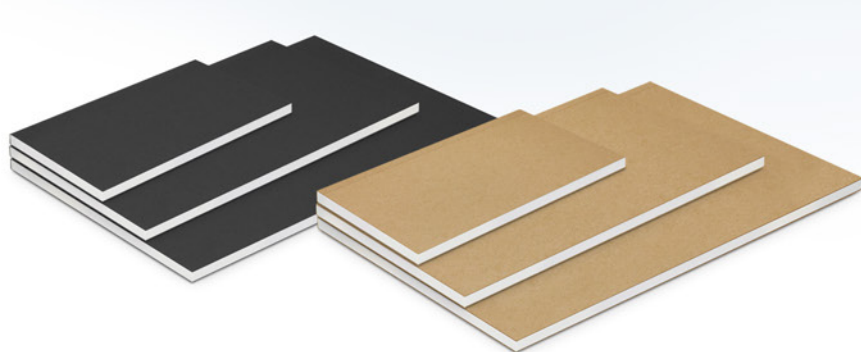
Code: 108400

Description: Medium size wire-bound notebook which has 60 leaves (120 pages) of lined paper and a pen loop. It has a hard cover which is finished with kraft paper to produce a natural recycled look. Allegro has a black Eco Pen which is manufactured from recycled cardboard.

Branding Options:

• Pad Print • Screen Print • Direct Digital (pen only)





Reflex Notebook

Code:

- 110459 - Reflex Notebook - Small
- 110465 - Reflex Notebook - Medium
- 110466 - Reflex Notebook - Large

Description: Eco-friendly, perfect bound notebook which is available in three handy sizes. It has 60 leaves (120 pages) of lined paper and a cardboard cover.

Branding Options:

- Pad Print • Screen Print

Eco Note Pad

Code:

- 100897 - Eco Note Pad – Small
- 100895 - Eco Note Pad – Medium

Description: Eco-friendly, wire bound note pad which is available in two sizes. They are manufactured from recycled paper and have 60 leaves (120 pages) of lined paper. The smaller pocket size is bound at the top and the larger size is bound at the side.

Branding Options:

- Pad Print • Screen Print (medium size only)



Paper Carry Bag

Code:

- 107582 - Paper Carry Bag – Small
- 107586 - Paper Carry Bag – Medium
- 107590 - Paper Carry Bag – Large
- 107594 - Paper Carry Bag - Extra Large

Description: Paper carry bag which is available in four convenient sizes and is manufactured from tough 160gsm craft paper.

Branding Options:

- Screen Print

Enviro Notebook

Code: 100933

Description: Top opening wiro bound pocket notebook with 50 leaves (100 pages) of lined paper. It has an elastic closure band, an elastic pen loop and a pen. Both the notebook and pen barrel are made of recycled paper and the plastic parts of the pen contain corn starch material to reduce the amount of plastic used.

Branding Options:

- Pad Print • Direct Digital (pen only)



Comet Note Pad

Code: 107078

Description: 100 leaves (200 pages) of adhesive notes in a pocket size pad with a cardboard cover.

Branding Options:

- Pad Print

Cardboard Pen Sleeve

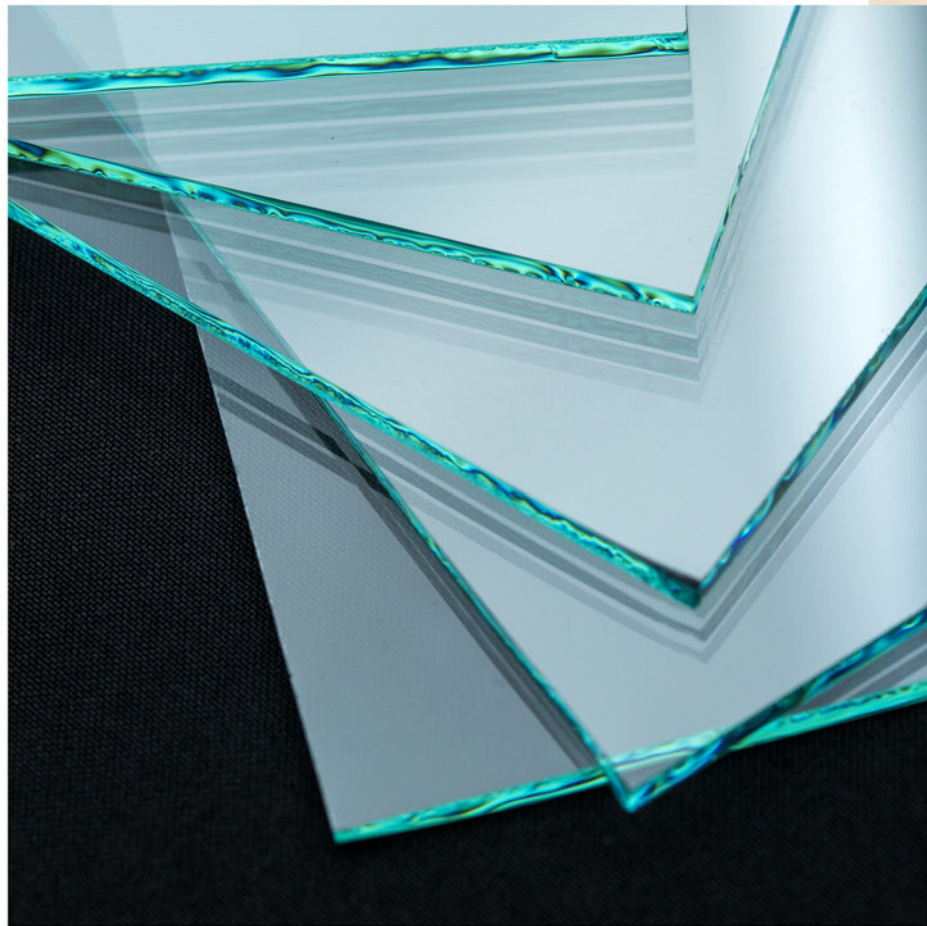
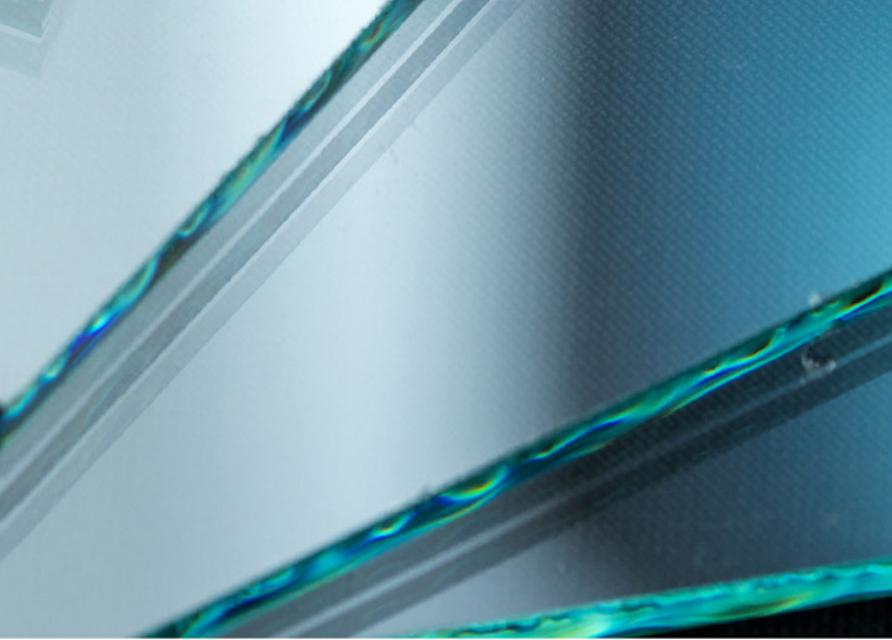
Code: 115515

Description: Cardboard pen sleeve which offers affordable presentation for pens using a sustainable natural resource.

Branding Options:

- Pad Print





GLASS

Glass is an aesthetically pleasing and extremely sustainable material which is manufactured from sand. It is easily recycled and has become an environmentally friendly natural alternative to single-use plastic bottles and cups.



Divino Double Wall Glass Cup

Code: 114338

Description: Trendy 350ml double wall borosilicate glass cup for hot or cold drinks. It will keep drinks hot or cold for longer and remains pleasant to hold with no condensation on the outside. Divino has a large silicone band and a push on glass lid with a secure silicone seal. The band and seal can be mixed and matched in any colour combination from the standard colours. Up to five different colour combinations are included in the price and more are available for an additional charge. Borosilicate is a lightweight glass which is exceptionally strong and shatter resistant. It is a natural BPA free choice for a clean, pure taste and it offers a safe and eco-friendly alternative. Divino is presented in a white box and handwashing is recommended.

Branding Options:

• Pad Print • Screen Print • Debossed



Aztec Double Wall Glass Cup

Code: 115064

Description: Trendy 350ml double wall borosilicate glass coffee cup which has a secure push on silicone lid and a large silicone band. The double wall keeps drinks hot for longer and the surface remains comfortable to touch. The lid and band can be mixed and matched in any colour combination from the colour palette at no extra cost. Up to five different colour combinations are included in the price and more are available for an additional charge. Borosilicate is a lightweight glass which is exceptionally strong and shatter resistant. Glass is a natural choice for a clean, pure taste and it offers a safe and eco-friendly alternative. It is presented in a black gift box and handwashing is recommended.

Branding Options:

- Screen Print • Debossed



Metro Cup

Code: 113053

Description: Fashion inspired 340ml reusable glass coffee cup with a secure push on silicone lid and a wide heat resistant silicone band. The lid and band can be mixed and matched in any colour combination from the colour palette at no extra cost. Up to five different colour combinations are included in the price and more are available for an additional charge. Glass is a natural choice for a clean, pure taste and it offers an eco-friendly alternative to single use paper cups. Metro Cup is presented in an unbleached cardboard gift box with a window to show the branding and product care instructions are printed on one side. An optional gift tube is available and handwashing is recommended.

Branding Options:

- Pad Print • Screen Print • Debossed



Venus Glass Bottle

Code:

- 111271 - Venus Glass Bottle
- 111266 - Venus Bottle - Silicone Sleeve

Description: 600ml borosilicate glass drink bottle which has a secure screw on stainless steel lid. It can be supplied on its own or with the addition of a protective soft touch silicone sleeve. Borosilicate is a lightweight glass which is exceptionally strong and shatter resistant. Glass is a BPA free natural choice for a clean, pure taste and it offers a safe and eco-friendly alternative. Handwashing is recommended.

Branding Options:

- Pad Print • Screen Print • Imitation Etch • Laser Engraving (lid only)





Eden Glass Bottle

Code:

- 113025 - Eden Glass Bottle
- 113950 - Eden Glass Bottle - Silicone Sleeve

Description: 600ml borosilicate glass drink bottle which has a trendy screw on bamboo lid with a matching braided carry handle. It can be supplied on its own or with the addition of a protective soft touch silicone sleeve which is available in 10 colours. Borosilicate is a lightweight glass that is exceptionally strong and shatter resistant. Bamboo is natural material which produces unavoidable variances in the grain pattern, colour and branding. Glass is a BPA free natural choice for a clean, pure taste and it offers a safe and eco-friendly alternative. Handwashing is recommended.

Branding Options:

- Pad Print • Screen Print • Imitation Etch • Laser Engraving (lid only)



STAINLESS STEEL

Drinkware manufactured from stainless steel has an extremely long lifespan; keeping your brand in the public arena for longer. It can be recycled numerous times and is a great replacement for single-use drinkware. Stainless steel doesn't require a plastic lining which ensures a chemical and odour-free beverage.





Nomad Deco Vacuum Bottle - Powder Coated

Code: 115848

Description: Impressive 650ml double wall, vacuum insulated stainless steel drink bottle which has an extremely durable powder coated matt finish. It will keep drinks cold for 24 hours or hot for up to 12 hours. It has a trendy screw on lid with a stainless carry handle and a bamboo veneer that offers a prominent branding opportunity. (Wood is natural material which produces unavoidable variances in the grain pattern, colour and branding). The lid laser engraves to a natural etch and the bottle laser engraves to a shiny steel finish. Nomad is BPA free and handwashing is recommended. It is nicely presented in a black gift box or an optional gift tube.

Branding Options:

• Screen Print • Digital Transfer • Rotary Digital Print • Laser Engraving



Nomad Vacuum Bottle - Powder Coated

Code: 115747

Description: Impressive 650ml double wall, vacuum insulated stainless steel drink bottle which has an extremely durable powder coated matt finish. It will keep drinks cold for 24 hours or hot for up to 12 hours. It has a trendy screw on lid with a stainless carry handle and a bamboo veneer that offers a prominent branding opportunity. (Wood is natural material which produces unavoidable variances in the grain pattern, colour and branding). The lid laser engraves to a natural etch and the bottle laser engraves to a shiny steel finish. Nomad is BPA free and handwashing is recommended. It is nicely presented in a black gift box or an optional gift tube.

Branding Options:

• Screen Print • Digital Transfer • Rotary Digital Print • Laser Engraving



Mirage Powder Coated Vacuum Bottle

Code: 116329

Description: Trendy 500ml double wall, vacuum insulated stainless steel drink bottle with a timeless design. It will keep drinks cold for 24 hours or hot for up to 12 hours. Mirage has a stunning powder coated finish and a secure screw on lid. It is available in a range of colour options including mix and match. Mirage is BPA free and laser engraves to a shiny steel finish. It is presented in a black gift box and an optional gift tube is available on request. Handwashing is recommended.

Branding Options:

- Pad Print • Screen Print • Laser Engraving • Rotary Digital Print

Colour Match: The powder coated bottles and lids match.



Classic: Powder coated bottles with the classic stainless steel lid.





Mix and Match: The bottle and lid can be mixed and matched. Up to five different colour combinations are included in the price and more are available for an additional charge. The combinations illustrated are examples of colour combinations.

Presentation:



Black Gift Box - Included



Natural Gift Tube - Optional



Black Gift Tube - Optional



Verona Vacuum Cup

Code:

116135 - Verona Vacuum Cup with Handle

116136 - Verona Vacuum Cup

Description: Premium 300ml double wall, vacuum insulated stainless steel coffee cup with a stunning powder coated finish and a soft non-marking base. It has a transparent push on lid and will keep drinks hot or cold for approximately three hours. Verona laser engraves to a stainless steel finish and is BPA free. It is presented in a black gift box and handwashing is recommended. The black and white options can be supplied with or without a handle.

Branding Options:

• Pad Print • Laser Engraving



Caldera Vacuum Flask

Code: 113780

Description: Compact 380ml double wall, vacuum insulated stainless steel food flask which is perfect for hot lunches or snacks on the go. It is also ideal for keeping yoghurt and desserts cool. Caldera has a secure screw on lid with a handy carry handle and it will keep food hot or cold for approximately six hours. Handwashing is recommended and it is BPA free. It laser engraves to a stainless steel finish and is presented in a black gift box.

Branding Options:

• Pad Print • Screen Print • Laser Engraving



Arc Vacuum Cup

Code: 113422

Description: Compact 400ml double wall, vacuum insulated stainless steel cup which will keep drinks hot or cold for up to six hours. It is also ideal for taking soup and food to work or school. It features a secure screw on lid with a push button activated flip closure which is spring loaded for smooth, effortless operation. The lid prevents leaks and spills even if the cup is knocked over and it is so robust it can be carried in a bag or backpack. It is BPA free and laser engraves to a stainless steel finish. Arc is presented in a black gift box and handwashing is recommended.

Branding Options:

• Pad Print • Screen Print • Laser Engraving





REUSE AND REDUCE

Being environmentally aware doesn't mean only choosing products that are manufactured from sustainable materials. Reusable promotional products replace the need for single-use plastic items and send a positive message that is aligned with your brand.





Paper Drinking Straws

Code: 116798

Description: Set of 10 striped paper drinking straws which are presented in an unbleached cardboard box. Paper straws are an environmentally friendly alternative to plastic straws and are a great way to send a positive message. Branding is on the box.

Branding Options:

- Pad Print • Digital Label



Silicone Straw

Code: 115163

Description: Every day we use enough single use plastic straws to circle the equator 2.5 times if they were laid end to end. Reusable, food grade silicone drinking straws are a safe alternative and a hot new product for promotion that sends a positive message. They can easily be cut to size with scissors to suit most tumblers and washing instructions are included in each box.

Branding Options:

- Screen Print • Debossed





Karma Reusable Wrap

Code:

- 114098 - Karma Reusable Food Wrap
- 115228 - Karma Reusable Food Pouch
- 115227 - Karma Reusable Snack Pouch

Description: The Karma range of reusable food wraps eliminate the need for single use plastic food wrap and ensures lunch boxes are waste free. Karma has a hygienic food grade EVA liner which is waterproof and can easily be wiped clean or machine washed. A production lead time of 25 working days applies to these products by air freight and larger orders can be sea freighted on request to reduce the freight cost.

Branding Options:

- Sublimation Print

Origin Produce Bags - Set of 5

Code: 113781

Description: National Geographic has estimated that eight million tonnes of plastic enters the oceans every year. We all need to help reduce or eliminate single use plastic products as they are one of the biggest contributors to the massive amount of plastic pollution on our planet. Origin is a set of five reusable mesh produce bags with a drawstring closure. They can be washed and reused many times and are designed for transporting fruit and vegetables while allowing them to "breathe" so they arrive home in the best possible condition. The produce bags are supplied in a compact 210D drawstring polyester carry bag which can be branded.

Branding Options:

- Screen Print • Digital Transfer



Ergo Fold-Away Bag

Code: 114325

Description: Reusable shopping bags are the responsible choice but for large shopping trips they can be bulky to store and carry to the supermarket. Ergo is manufactured from lightweight, yet very strong 190T polyester. When it is not in use it can be folded away into its own unique, built in drawstring pouch which has a locking toggle and a carry strap. It is presented flat packed ready for use.

Branding Options:

- Pad Print

Atom Fold-Away Bag

Code: 114319

Description: Reusable shopping bags are the responsible choice but for large shopping trips they can be bulky to store and carry to the supermarket. Atom is manufactured from lightweight, yet very strong 190T polyester. When not in use it is easily folded away into a very compact carry pouch that has a dome closure and a handy clip. Branding is on the carry pouch and because of its compact size; Atom makes a very affordable mass market promotional gift.

Branding Options:

- Pad Print





Super Shopper Tote Bag

Code: 106980

Description: Robust tote bag with a large gusset which is ideal for carrying heavy products like supermarket shopping. It is manufactured from 80gsm non-woven polypropylene material. Super Shopper has reinforced handles and a reinforced cardboard base for added strength.

Branding Options:

- Screen Print • Digital Transfer



Transporter Tote Bag

Code: 113313

Description: Groceries rolling around in the back of the car are a thing of the past with this unique tote bag. It is designed for supermarket shopping and is far superior to conventional tote bags. Transporter has reinforced sides and a large reinforced base to ensure it won't fall over. It is manufactured from 80gsm non-woven material and folds flat when not in use. Other features include a front slip pocket, long woven carry handles and side handles which are ideal for lifting it in and out of a supermarket trolley and the car.

Branding Options:

- Screen Print • Digital Transfer





Mix and Match: The bottle and lid can be mixed and matched. Up to five different colour combinations are included in the price and more are available for an additional charge. The combinations illustrated are examples of colour combinations.



Express Cup Claritas - 350ml

Code: 115012

Description: Crystal clear 350ml reusable coffee cup with a heat resistant silicone band and a secure screw on lid with a splash proof flip closure. The cup is manufactured from AS plastic and the lid is polypropylene. Both materials are BPA free. The lid, flip closure and band can be mixed and matched in any colour combination from the colour palette at no extra cost. Up to five different colour combinations are included in the price and more are available for an additional charge. It can be presented in an optional black gift box and handwashing is recommended. Express Cup Claritas is protected under New Zealand Design Registration No. 419451 and Australian Design Registration No. 361937.

Branding Options:

• Pad Print • Screen Print • Debossed



Mix and Match: The bottle and lid can be mixed and matched. Up to five different colour combinations are included in the price and more are available for an additional charge. The combinations illustrated are examples of colour combinations.



Express Cup Leviosa with Band

Code:

- 116346 - Express Cup Leviosa with Band – 230ml
- 116260 - Express Cup Leviosa with Band – 330ml

Description: Reusable 330ml double wall coffee cup which will keep drinks hot for longer. It has a silicone band and a secure screw on lid with a splash proof flip closure. Available in two sizes, the cup is manufactured from crystal clear AS plastic and the lid is polypropylene. Both materials are BPA free. The lid, flip closure and band can be mixed and matched in any colour combination from the colour palette at no extra cost. Up to five different colour combinations are included in the price and more are available for an additional charge. It can be presented in an optional black gift box and handwashing is recommended. Express Cup Leviosa is protected under New Zealand Design Registration No. 419451 and Australian Design Registration No. 361937.

Branding Options:

- Pad Print • Screen Print • Debossed

